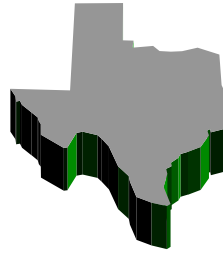


CASP News



Inside this Issue:

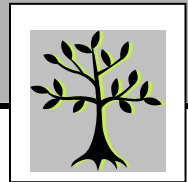
CASP 2007	1-3
Future Conferences	3-5
Feature Articles	6-7
TxCRLA News	8-10
TADE News	10-11
Commentary	12
National News	13-14
CASP Officers	15

TxCRLA
Texas College Reading
and Learning
Association

TADE
Texas Association of
Developmental
Education

CASP 2007: *Finding Pathways*

October 17-19, 2007
Welcome to the Woodlands!



CASP 2007 will take place October 17-19 in the Waterway Marriott located in The Woodlands. Our hotel is beautiful with many rooms overlooking a lovely, serene waterway. While the Waterway Marriott has a great restaurant, a number of dining venues with delicious menus are located within walking distance of the hotel. Rooms at the Waterway Marriott are \$159 for a room with one bed or \$169 for a room with two beds. Make your reservations by calling 1-800-228-9290.

Those of you flying in will want to consider using Bush Intercontinental Airport as it's closest to The Woodlands. However, SuperShuttle is available from both Bush Intercontinental and Hobby. You can call 1-800-258-3826 to make your SuperShuttle reservations. Be sure to use the code 29776 when making your reservation.

Conference registration is \$160 for early registration. Registration at the conference is \$185.

Pre-conference institutes this year are excellent. Russ Hodges will be presenting his tutor training institute for the tenth year! Congratulations and many thanks to Russ and the many other professionals who have offered this valuable service to our student tutors over

the years. You'll also be able to attend institutes on study skills, active learning, House Bill 1, and the P-16 Council's Developmental Education Sub-Committee – plus more! In addition, on Thursday and Friday, choose from more than 50 concurrent sessions devoted to math, reading, writing, learning communities, assessment, learning styles, Supplemental Instruction, and tutoring as well as a number of other topics--all presented by your colleagues from 31 institutions. So make plans to come early and participate in the pre-conference institutes on Wednesday.

After learning as much as possible at the conference, take advantage of the many terrific shopping opportunities that surround the Waterway Marriott. Or you might wish to ride the Waterway Taxi and enjoy the scenery aboard comfortable boats.

Yes, at CASP 2007, you will learn much. Yes, at CASP 2007, you will get to visit with valued colleagues and friends. However, if you like chocolate, you can also take home a most memorable experience when you go to Chocolata. Located only a block or so from the Waterway Marriott, this restaurant offers chocolate drinks, chocolate candies, chocolate pastries, chocolate ice creams and the best carrot cake on the planet. **Plan to attend!**

**College Academic
Support Programs**

**Conference jointly sponsored by Texas College Reading
and Learning Association
and Texas Association of Developmental Education**

Institutes

Institutes Galore at CASP Conference

CASP 2007 offers a variety of pre-conference institutes this year. If the State's current interest in Summer Bridge Programs has your institution considering starting one, you might want to attend "Bridge-in-a-Box: A Template for High School to College Bridge Partnerships" offered by Lea Campbell, Shari Chastain, and Cynthia Williams from North Harris Montgomery Community College.

Those of us who look at each semester's new crop of students and feel the generation gap in a big way should plan on attending Texas A&M Jean Layne's pre-conference institute "Today's Students: Facilitating the Learning Process for 'Net-Gen'." Claire Weinstein from the University of Texas at Austin shares her expertise in a pre-conference institute titled "Fostering Strategic Learning: Case Study of a Learning-to-Learn Course."

Sharon Miller from Cy-Fair College will be offering her "Power Up! Active Learning Strategies That Work" pre-conference institute. We all know the value of engaging students quickly and effectively. In Sharon's presentation, you'll learn multiple strategies that you can take back to the classroom as soon as the conference is over.

And if you've been wondering how to make your Supplemental Instruction Program more effective, then you should consider sitting in on Sara Weertz's pre-conference institute "Empirical Evidence regarding 'A' Students and Supplemental Instruction." From Angelo State University, Sara will demonstrate how to create a tracking system that can predict the kind of students who will use the program.

College Academic Support Programs



You are cordially invited to...

The 26th Annual CASP Conference

October 17th - 19th, 2007

The Conference Center of The Woodlands Waterway Marriott

<http://www.marriott.com>

Memberships in both the Texas Association for Developmental Education & the Texas College Reading and Learning Association, the CASP Hospitality Suite, Exhibits, a Town Hall Meeting and much more!

In addition, we have pre-conference institutes discussing the work of the P-16 Council's Sub-Committee on Developmental Education and its impact on you, House Bill One and the various ways it will be affecting your institution and you, and tutor training. So make plans to attend one (or more!) of this year's pre-conference institutes on Wednesday, October 17, 2007.

Tutor Training Institute Celebrates 10th Anniversary at 2007 CASP Conference

Ten years ago, Dr. Russ Hodges of Texas State University – San Marcos first offered a tutor training pre-conference institute at CASP. Congratulations to Russ and the many professional colleagues who over the years have presented valuable training to literally hundreds of tutors. Again this year, Dr. Hodges will offer his tutor training institute:

Featured Conference Institute

Tutor Training Leadership Institute—Year 10

Institute Facilitator:

Russ Hodges, Texas State University-San Marcos

Featured Presentations:

“Implementing Universal Instructional Design During Tutoring”

Gladys Shaw, University of Texas at El Paso

“Experiential Tutor Training Activities”

Todd Phillips, East Central College (Union, MO)

This three-hour institute provides training from leading experts in the field of developmental education for undergraduate and graduate students involved in peer-teaching, tutoring, supplemental instruction, mentoring or academic peer-counseling. The institute also models training activities for learning center supervisors and coordinators.

Participants who are seeking any level of CRLA Tutor Program Certification will receive three hours credit toward that certification.

Special Notes: Undergraduates and graduate students who choose to attend only this institute and not the CASP conference will be required to pay only the institute fee. Participants attending the CASP conference will be assessed regular CASP registration and institute fees, but students are eligible to attend the CASP conference at special student rates. This institute is limited to 50 participants. Pre-registration is required.

This institute is endorsed by

College Reading and Learning Association

National Association of Developmental Education

FUTURE CONFERENCES

It's time to mark your calendars for opportunities to grow professionally. There is a number of conferences planned in the near future just waiting to take your registrations. If you attend one or all the conferences mentioned below, you will have the opportunity to learn, share, and network with other colleagues. So be proactive and choose one or more to attend and get your registration and/or proposal into the conference(s) of your choice.

CASP 2007 – “Finding Pathways” --The Woodlands, TX – Oct. 17-19, 2007

CRLA 2007 – “Focus on Learning” – Portland, OR --Oct. 31-Nov. 3, 2007

NCLCA 2007 – “Learning Centers By Design” – Atlanta, GA – Sept. 26-29, 2007

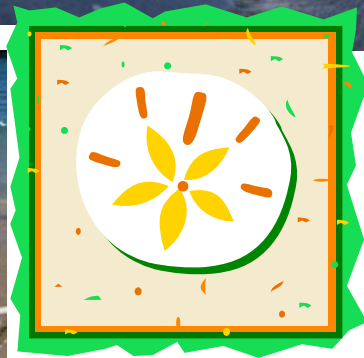
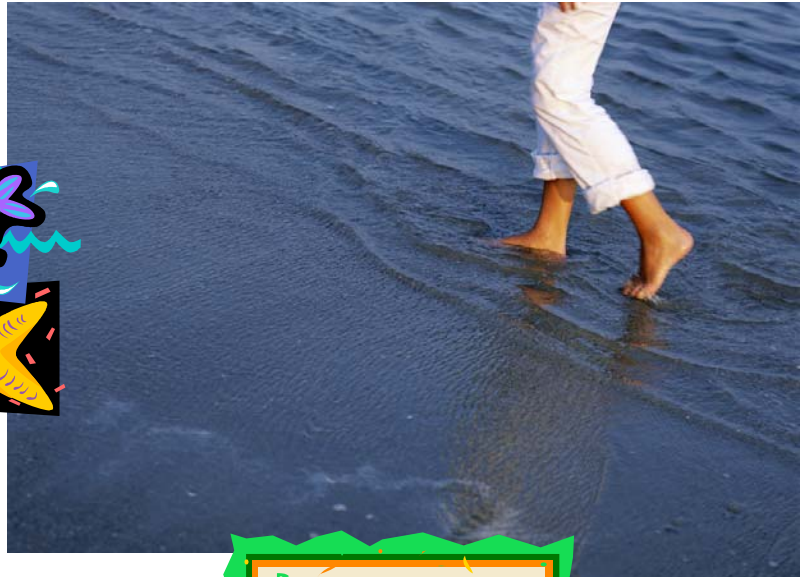
NADE 2008 – “The New Revolution” – Boston, MA. – Feb. 27-Mar. 1, 2008

CASP 2008 – “Surfing the Waves Together: Academics, Support Programs, and Research” – Corpus Christi, TX – Nov. 5-7, 2008

CASP 2008

Corpus Christi Omni Bayfront

This is your official invitation to the **CASP 2008 Conference**. Pack your bags and don't forget to throw in your swimsuit, flip flops, and casual attire. Get ready for fun in the sun in Corpus Christi. Our theme, "Surfing the Waves Together: Academics, Support Programs, and Research," is set and we are actively working on the events and sessions that will offer opportunities for useful professional development. The participants will be exposed to friendly people, super attractions, unique dining, shopping and beautiful beaches! So mark your calendars, **November 5-7, 2008**, and plan to attend an exciting CASP 2008 conference in Corpus Christi at the Omni Bayfront. Look for more details coming your way soon.



40th Annual CRLA Conference: Focus on Learning Portland, Oregon Oct. 31-Nov. 3, 2007

The [CRLA Board members](#) and the Conference and On-site Chairs welcome you to visit our 40th Annual CRLA Conference website. The conference focuses on three dimensions of learning: Student Learning, Staff Learning, and Organizational Learning. We are excited to continue the standards of past conferences as we move towards beginning our fifth decade of improving the learning of our students, staff, and organizations. If we can be of assistance, please let us know.



Conference Chair: Rick A. Sheets, Ed. D.
Director, Learning Support Center
Paradise Valley Community College
Maricopa Community Colleges
Tel: 602-787-7183
Fax: 602-787-7820
e-mail: rick.sheets@pymail.maricopa.edu



On-site Chair: Frieda R. Campbell-Peltier, Ph.D.
Instructor of Developmental Reading & Writing
Portland Community College
Sylvania Campus, SS 215
Tel: 503-977-4449
Fax: 503-977-4959
e-mail: fcampbel@pcc.edu

Authors' Corner

We would like to acknowledge and share your publications in the field of developmental education. Please send a complete citation of your recent work in our field along with your title and institution to Lisa Cradit, CASP Newsletter Editor, lcradit@tlu.edu.

Newsletter Submissions

The CASP Newsletter is looking for a feature or a success article for its next issue (Spring 2008). A position paper, book review, program description, or empirical report are all welcome contributions. We have 1000+ readers who want to hear about what you do. Please submit your idea, or a brief overview of your planned submission to lcradit@tlu.edu. Final articles should be 1000 to 1500 words in Times New Roman, 10 point font.

Feature Article

A new twist to drop-in tutoring was piloted in the 2006 fall semester on the campus of Texas A&M University in College Station. Under administration of the Texas A&M Student Learning Center (SLC), free individual or group tutoring was offered in the Memorial Student Center (MSC), the University’s “student union.” The MSC is a high traffic site on our campus of slightly over 43,000 students, thus an ideal location for a **Tutor Zone**.

**Tutor Zones
Piloted
at Texas A&M
University**

Karon Mathews,
Executive Director
Student Learning Center

The advantages to students are obvious and include access to a free, CRLA tutor-certified program in a place where many students may be seen at all hours relaxing and studying. Perhaps even more important is that the availability of a Tutor Zone in the MSC location encourages a culture of studying and academic excellence in a student-focused campus building.

The advantages to the SLC may transfer to other colleges and universities where prime campus real estate is at a premium. The Tutor Zone is in a large roomy space that conveys an atmosphere similar to that of a family den or great room. The building is available and open to the public late into the evening hours. Because the MSC is a public facility, need for direct supervision of the tutors is decreased and risk to the SLC is minimal. Another advantage for the SLC is that the Tutor Zone concept increases the visibility and services of the department and

allows us to provide a cost-effective program that carries a low overhead so that program funding is designated for tutor salaries and supplies.

In addition to the MSC, the SLC opened an additional Tutor Zone during the 2007 semester in Studio 12, a facility in an area called the Commons which is a central gathering site for students residing in a residence hall complex located on the south side of the central Texas A&M campus. Studio 12 is another spacious, student-oriented facility where students have access to a coffee shop and lounge area along with sofas, study tables, and pool tables. It is similar to the MSC in that students use the facility for relaxing, studying, and meeting friends. The Studio 12 Tutor Zone was funded by the Department of Residence Life and the Office of the Vice President of Student Affairs. The residence hall Tutor Zone site provides an excellent opportunity for the SLC, a department within the Division of Academic Affairs, to collaborate with the Division of Student Affairs. A win-win situation for both divisions is created.

The tutors are the heart of the Tutor Zone program. These are upper-level students who have served as SI leaders multiple semesters and desire additional hours of employment. The tutors/SI leaders have participated in training through the SI program and additionally, the CRLA certification program. An advantage to the SLC is that we have worked with these students and know they are dependable, loyal, and skilled in assisting students with their studies. We are not assigning inexperienced students to the Tutor Zones.

For more information on this program at Texas A&M University, contact Richard Johnson, Associate Director of the SLC, rgj@tamu.edu. Richard coordinates the Tutor Zone and SI programs, and coordinated our third bi-annual SI conference conducted May 16-18 on the Texas A&M campus. More information on the SLC may be obtained by visiting <http://slc.tamu.edu>.

**The illiterate of the 21st
century will not be those who
cannot read and write, but
those who cannot learn,
unlearn, and relearn.**

Alvin Toffler

Feature Article

Training Topics to Help SI Leaders Become Good Tutors

By Robin Melton – UT Arlington

Many colleges offer both Supplemental Instruction and tutoring. UT Arlington has been offering both services for some time. When hiring SI leaders to be tutors and tutors to be SI leaders, we have found that sometimes crossing over to new roles is not automatic, even with training provided. Often, additional monitoring is necessary to make sure that paraprofessionals (in either role) clearly understand what is expected. SI leaders sit in on class and hold multiple sessions outside of class each week and provide students with handouts and group activities. Tutors work one-on-one with students on an as-needed, appointment basis. The topics below deal with the transition from SI leader to individual tutor.

- 1) Definition of role in tutoring is trickier and more negotiable than in leading SI sessions.
 - Everyone comes to the table with expectations which may/may not be the same as the Program guidelines.
 - How will the sessions be structured? Will the student take the lead or will the tutor?
 - Is the tutor going to teach a given concept, question students using Socratic questioning, or simply validate student answers?
- 2) Determining what constitutes academic honesty for a given class.
 - The SI leader has firsthand information from the class, whereas the tutor may have to gather information from the student and determine the best course of action in helping the student.
 - Assertiveness/empathy skills are very, very important for tutors, especially in these situations: dealing with students' original work; dealing with take-home tests; determining how much help is too much help.
- 3) Preparation is generally less for tutoring than for SI, but is still necessary as thinking on one's feet becomes even more important.

- student's agenda, but still makes sure that the tutee takes away something on paper that will be helpful when studying on his/her own.
 - Also, the tutor must work to build student confidence and must develop multiple ways for explaining different concepts. Since the tutor is now dealing with an individual, he cannot simply "move on" as an SI leader might.
- 4) Individualization of instruction is much more prevalent in tutoring than in Supplemental Instruction.

The tutor must begin working with the student at an appropriate level, which is not necessarily at the same level as the student's assignment. Checking the student's knowledge of pre-requisites by having him/her complete an example problem may be necessary to let the tutor know where to begin. Tutors often find that students have not taken the prerequisite courses or have forgotten the content because they have not encountered it in a long while

- 5) Referral/professionalism skills are very important. Because tutoring is typically one-on-one, students may share more personal information and personal problems. Knowledge of good referral sources for one's campus and professional dos and don'ts becomes very important for students served as well as for avoiding liability issues. Students may be more likely to report harassment, for example, to their tutor. Also, it is important for tutors to know that they could be harassed by students and to deal professionally with students to avoid any complaints of unprofessionalism.

Lastly, it is important for SI leaders to be able to empathize. You can help them learn this by having them think of a skill that they would like to learn on their own, such as piano, golf, etc. What would be their chief concerns about signing up for individual lessons? What attributes would they want their teacher to possess? How would they want to be treated for an optional enrichment activity? All of the help services we provide are optional, not mandated. Students who provide assistance both as SI leaders and tutors must clearly understand their roles and be able to provide very different types of academic support.

TxCRLA News

By Karon Mathews, President

Officer Nominations

Sharon Haigler of Texas A&M University has been nominated to serve as President-Elect and Richard Trevino of The University of Texas – Pan Am has been nominated to fill the office of Treasurer. As sole nominees for their respective officer positions, Sharon and Richard will assume office at the CASP conference October 19 when Sharon Taylor, CRLA President, inducts officers serving TxCRLA during 2007-2008.

In February, Linda Callen of Texas A&M University agreed to assume the role as Membership Chair, a position she will hold for two years in accordance with the TxCRLA constitution.

TxCRLA Members Respond to Proposed CRLA Name Change

I hope you received the TxCRLA member e-mail sent after the June board meeting regarding the proposed name change of CRLA. If not, please read the statement in the box upper right.

I was pleased to hear from several of you in support of the Board's resolution. Due to space limitations in this newsletter, I am able to share a few of those with you:

■ *I think the name change (to College Learning Association) more accurately reflects the current role and mission of the organization. It also avoids the impression of a narrow or limited scope or focus (reading) in providing professional development for those involved in learning assistance on our campuses.*

My vote would be "yes" for a name change!

Dana L. Welch, M.S.
Student Affairs Admin., Lecturer
Office of Academic Support
The University of Texas at Tyler
3900 University Blvd.,
Tyler, TX 75799
Phone: 903-565-5727
Fax: 903-565-5811
Dana_Welch@uttyler.edu

Let Us Hear From You....

At the June 30, 2007, meeting of the executive board, the officers of the Texas chapter of CRLA unanimously voted to support changing the name College Reading and Learning Association to **College Learning Association**. This resolution reflects the views of the current TxCRLA board, only, and may not reflect the opinions of TxCRLA members. CRLA and TxCRLA are currently soliciting input from the membership regarding your views on changing the CRLA name. Please contact any member of the CRLA or TxCRLA executive boards to express your opinions.

■ *I believe the name change is extremely overdue and necessary to reflect the areas served by this outstanding organization other than reading. My business, math, science, and even writing tutors have looked at the word "Reading" in the name of the organization and felt that it did not cater to their specific needs. All of us are aware that tutoring is far more than reading, and it covers much more than any specific content. The tutor training topics that are required are broad enough to cross over into many areas and professions. Therefore, the name change has my full support.*

James C. Mathews
Student Learning Assistance Center (SLAC)
Learning Lab Coordinator
Texas State University, San Marcos TX 78666
jm16@txstate.edu
(512) 245-2515

■ *Name change sounds great. Got my vote.*

Santiago Silva, Ph.D., LPC
Clinic Director/Assistant Professor
Educational Psychology Department
The University of Texas-Pan American
1201 W. University Drive, EDCC 1.510
Edinburg, Texas 78541
956-292-7264
ssilva@panam.edu

TxCRLA News *Continued*

TxCRLA Constitution/Bylaws

As you know, TxCRLA is the state chapter of the national College Reading and Learning Association (CRLA). CRLA operates on by-laws. I have been working to convert the TxCRLA Constitution to by-laws so that our state chapter will be in line with the national organization. Please watch your e-mail for the proposed set of by-laws approved by the TxCRLA executive board at the June board meeting. We'll be voting on adopting the proposed by-laws at the state meeting during the CASP 08 conference.

Speaking of which...I hope you are putting the CASP conference, October 17-19, on your fall professional development calendar! Site Chair Lane Johnson has contracted with the Waterway Marriott Hotel, a beautiful property in a beautiful setting! We'll be within walking distance from great shopping opportunities if you need retail therapy (and who doesn't?) and restaurants if you want to venture out of the lovely hotel. Personally, I'm looking forward to a cheeseburger at Johnny Rocket's in the Woodlands Town Center! There's plenty to do after a day filled with motivational sessions on all areas of learning assistance. I look forward to seeing you all in October!

TxCRLA Treasurer's Report January 1, 2007 to June 30, 2007	
Beginning Balance	\$ 4,384.09
CASP 06 Profits	15,321.87
Deposit – membership	70.00
WTC Sentinel Network fund	<u>724.15</u>
Total Income:	\$ 20,500.11
Expenses:	
CASP Planning exp.-- Mathews	\$ 48.20
NADE reimbursement	384.00
Rosemary Karr- newsletter exp.	40.00
TADE-1/2 WTC fund	362.08
Bank fee (copy)	2.00
Bank Service Charge & fees	<u>33.00</u>
Total Expenses:	\$ 869.28
Balance to Date:	\$ 19,630.83
Respectfully submitted by: Sharon Haigler, Treasurer TxCRLA	

Ann B. Faulkner Professional Development Award

The Texas Chapter of the College Reading and Learning Association (TxCRLA) established the Ann B. Faulkner Award in 1994. The award supports further professional development and research activities related to learning assistance or developmental education. TxCRLA members may apply for the \$500 award which may be used to support graduate study, attendance at professional meetings, and research.

Application procedures: Submit name, address, phone numbers, academic/professional affiliation, and length of TxCRLA membership along with a proposal for professional development or research including the specific need for financial support and a budget of projected expenses. Please include other anticipated sources of funding. A letter of support from the applicant's immediate supervisor and, if appropriate, a major professor should be included as well.

Please mail application packets (including supporting letters) to :

Dr. Karon Mathews, TxCRLA President, 118 Hotard Hall, 4230 TAMU, College Station, TX 77843-4230

Applications must be postmarked by September 15, 2007.

TxCRLA News *Continued*

TxCRLA Membership

Region CB #	Region Name	# of Institutions	# of TxCRLA Members	
			2006 July	2007 July
1	High Plains	9	3	4
2	Northwest Texas	10	1	1
3	Metroplex	36	14	13
4	Upper East Texas	18	0	2
5	Southeast Texas	6	13	7
6	Gulf Coast	29	29	17
7	Central Texas	17	38	12
8	South Texas	27	20	8
9	West Texas	6	0	0
10	Upper Rio Grande	3	12	9
Out of State	2007 - Wyoming	n/a	1	1
Total		161	131	74

TADE News

Texas Association for Developmental Education Membership Report

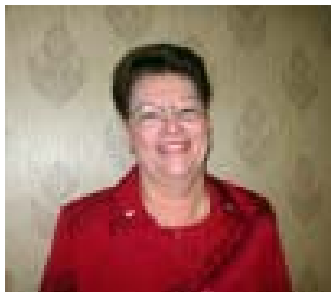
Great news! As of July 1, 2007, TADE has 213 members. TADE Membership offers many benefits: the CASP newsletter, updated information on TSI changes, the support of a political liaison officer who is constantly monitoring legislative efforts concerning TSI, membership in an organization of instructors and administrators like you who face and explore solutions to common problems, a sponsored annual conference on developmental issues, and a strong state organization to support our national parent organization NADE, which maintains and formulates initiatives and policy concerning developmental education problems. TADE membership will keep you on our mailing lists for "Call for Proposals," "Call to Conference," the CASP newsletter and for updated information on political changes.

Join today by completing the membership blank (next page). The \$10 TADE membership is a great value!

TADE News *Continued*

As President of TADE, I am happy to report that we have had a very active few months. Our membership chair, Carolyn Mello, has been very diligent about increasing membership.

At last count we now have over 200 members.



Thanks for becoming a member and being so interested in your state organization. Laura Villarreal, TADE secretary, has been busy updating our website, www.tade.net. She has been very careful to keep information current and informative on our website. The website now has a place to post job opportunities. Check it out! Santiago Silva, TADE Past President, and his committee are reviewing the present TADE Constitution. They will let us know if changes or additions need to be made. Jean Swartz, TADE Treasurer, and Laura Villarreal are working on a Policy and Procedures manual. Sandra Chumchal, President-Elect, is busy preparing for the CASP 2007 Conference in The Woodlands. She is Co-Program Chair for the Conference. And last, but not least, I, Betty Black, TADE President, am overseeing all activities mentioned. In addition, Santiago and I are actively working on the next CASP Conference, which will be held in Corpus Christi at the Omni Bayfront in November of 2008. As Co-Chairs, we are planning a wonderful event that will be enjoyed by all. As you can see, we have been a very industrious group these past few months.

Sincerely,
Betty Black



TADE TREASURER'S REPORT	
March 24, 2007 to June 29, 2007	
Beginning Balance	\$18,944.30
Income:	
Deposit: Expense adjustment 6/22/2007	\$ 30.00
Deposit: Membership 6/22/2007	420.00
Deposit: Membership 6/22/2007	140.00
Total Income	\$590.00
Expenses:	
Betty Black Check # 1311 (NADE)	\$1,477.00
Betty Black Check # 1312 (Silent Auction)	43.26
Carolyn Mello # 1313 (NADE)	935.62
Carolyn Mello #1314 (Postage)	15.60
Total Expenses:	\$2,471.48
Balance to Date	\$17,062.82
Respectfully submitted by:	
Dr. Jean Rogers Swartz, Treasurer	

TADE Membership Application

E-mail address _____

Name _____

Position _____

Institution _____

Academic Address _____

Phone _____ (W)

_____ (H)

_____ (FAX)

Membership application and \$10 should be sent to

Dr. Jean Swartz
South Texas College Developmental Studies
P. O. Box 9701
McAllen, TX 78502-9701

Commentary

By Russ Hodges

The CRLA of today has obviously experienced a natural evolution to encompass an even broader focus from its original purpose. The organization's newly crafted vision statement approved by the CRLA Board in 2006 and posted on the organization's website (www.crla.net) states, "CRLA is the leading international organization providing expertise in post-secondary student learning." The Board also formulated the following mission statement: "To facilitate the professional growth of its members to improve student learning in post-secondary education." Together the vision and mission reflect a paradigm shift from the original focus on reading to a more comprehensive approach, assisting students at all levels of the college continuum.

By recognizing the common interests of all college learning support professionals, a change in our name would increase the organization's appeal to our current and potential new members and move us to a position of prominence within our own field. I believe the name "College Learning Association" will offer more influence to support its reading specialists as well as all college learning disciplines. It is difficult to let go of an honored tradition, but a name change would provide our organization with continued growth and vitality as we all strive to support college student learning in the 21st Century.

Russ Hodges, Ed.D.
Texas State University-San Marcos
CRLA President, 2004-2005



The great aim of education
is not knowledge, but action.
Herbert Spencer

National News

Greetings from College Reading and Learning Association president Sharon Taylor!

Thank you for making last year in Austin at the 2006 CRLA/CASP conference such a memorable experience. I still remember the music, food, and friends. I missed making a trip to Austin this summer. Instead, I traveled to Denver and joined my husband in doing some fishing in addition to CRLA e-mails.

After this summer of work and relaxation, I am looking forward to returning to Texas in October. I am excited that I will be able to join you again at the 2007 CASP conference in the Woodlands. I miss my Texas friends and I want to meet even more of you. Once again, we will be able to share teaching and learning ideas that will impact our students.

Additionally, I personally invite you to another part of the "Wild West" for the 2007 CRLA conference in Portland, OR, for CRLA's 40th national conference, **A Focus on Learning**, Oct. 31-Nov. 3, 2007. More information about the conference is available on the conference home page: <http://www.pvc.maricopa.edu/~sheets/CRLA2007/index.htm> Online registration is NOW available; the deadline for the early registration rate was September 8, 2007 but you can still register at the regular rate. The link for the ONLINE REGISTRATION is at http://www.crla.net/conference_call.htm.

In addition to attending the national conference, check out the many possibilities on the CRLA webpage: www.crla.net. If you have questions for the national leaders, please write, e-mail, or call. You make a difference.

Sincerely,
Sharon Taylor
CRLA president

President:

Sharon M. Taylor
Western Wyoming Community College
2500 College Drive – 664A
Rock Springs, WY 82901
307-382-1725 (w)
307-382-1714 (fax)
staylor@wwcc.wy.edu

President Elect & 2007 Portland Conference Chair:

Rick A. Sheets
Paradise Valley Community College
18401 N. 32nd St
Phoenix, AZ 85032
Tel: 602-787-7183
Fax: 602-787-7820
rick.sheets@pvmail.maricopa.edu
<http://www.pvc.maricopa.edu/~sheets/>

Past President & Coordinator of States/Regions/Chapters & SIGs:

Valerie Smith
Stephens
327 Cooper Street
School of Social Work
Rutgers University
Camden, New Jersey 08102
(856) 225-6812 (w)
(856) 225-6155 (fax)
vstephen@camden.rutgers.edu

Secretary:

Dorothy Bonser
Owens Community College
2146 Central Grove Ave.
Toledo, OH 43614-4316
dbonser@buckeye-express.com

Treasurer:

Ann Wolf
Box 292763
Davie, FL 33329-2763
(954) 322-4498 (fax)
annwolf@hotmail.com

Executive Assistant:

Gretchen Starks-Martin
St. Cloud State University
720 Fourth Ave. South
St. Cloud, MN 56301-4498
(320) 308-4742 (w)
(320) 308-0959 (fax)
gastarks@stcloudstate.edu

National News *Continued*

National Association for Developmental Education

The National Association for Developmental Education (NADE) 2007 conference was a wonderful experience for all participants. Some highlights of the conference included keynote messages from Dr. Mark Milliron and Dr. Calvin Mackie, "Reba" and "Toby" at the Opening Reception, The Southern Belles' reception for our newcomers, the fabulous exhibit hall, and many, many wonderful institutes and concurrent sessions offered by our talented membership.

The next three conferences are scheduled for Boston in 2008, Greensboro in 2009, and Columbus in 2010. Mark your calendars and prepare for wonderful learning opportunities.

Two very important changes are taking place in NADE: the office is moving and the web site is being renovated. As of July 5, the new NADE address is as follows:

NADE

500 N. Estrella Pkwy Ste B2 PMB 412

Goodyear AZ 85338

(877) 233-9455 ph (623) 792-5747 fax

office@nade.net

www.nade.net

Check out the website. It has several pieces of information to offer.

We at TADE are proud to announce that one of our own, **Rosemary Karr**, has been elected as NADE President-Elect. Rosemary has served CASP faithfully for many years and is now going to continue her work on a national level. She will be installing the TADE officers at the CASP 2007 Conference in The Woodlands. Congrats, Rosemary, we are so proud to have a fellow Texan serve in such an important leadership on the NADE Board. The NADE officers are as follows:

President: Gerry McBroom

Central New Mexico Community College

525 Buena Vista SE

Albuquerque, NM 87106

(P) 505-224-3974

(F) 505-224-3991

(E) gerry@cnm.edu

Vice President: Mickey Hay

Southwestern Michigan College

58900 Cherry Grove Road

Dowagiac, MI 49047-9793

(P) 616-782-1306

(F) 616-782-8414

(E) mhay@swmich.edu

Secretary: Susan Ertel

Dixie State College

225 South 700 East

St. George, UT 84770

(P) 435-652-7661

(F) 435-656-4006

(E) ertel@dixie.edu

President-Elect: Rosemary Karr

Collin County Community College

2800 East Spring Creek Pkwy

Plano, TX 75074

(P) 972-881-5865

(E) RKarr@CCCCD.EDU

Treasurer: Jeanine Lewis

Aims Community College

5401 W 20th Street P.O. Box 69

Greeley, CO 80632

(P) 970-339-6254

(F) 970-506-6959

(E) Jeanine.lewis@aims.edu

NADE Award Presented

Kathy Stein, President-Elect of TxCRLA and a member of TADE, was presented with the Outstanding Thesis/Dissertation Award in Nashville, Tennessee at the NADE Conference in March. Dr. Stein's dissertation is titled *Developing Voices: A Study of Developmental Education Students and Their Perspectives on the Individual and Institutional Attributes Necessary for Academic Success*. Her qualitative study was conducted with exit-level developmental education students at her institution, The University of Texas at El Paso (UTEP).

CASP Executive Officers 2006-2007

TADE OFFICERS

Betty Black, President
Texas A&M University-Kingsville
University College MSC 206
Kingsville, Texas 78363
Office phone: 361-593-2198
Email: kfbjb00@tamuk.edu

Sandra Chumchal, President-Elect
Blinn College
P. O. Box 6030
Bryan, Texas 77807-6030
Office phone: 979-209-7359
Email: schumchal@blinn.edu

Dr. Jean Rogers Swartz, Treasurer
South Texas College
P.O. Box 9701
McAllen, Texas 78502-9701
Office phone: 956-872-3568
Email: jswartz@southtexascollege.edu

Dr. Laura Villarreal, Secretary
University of Texas at Brownsville
80 Fort Brown
Brownsville, Texas 78520
Office phone: 956-882-6626
E-mail: Laura.Villarreal@utb.edu

Carolyn Mello, Membership Chair
Lamar State College-Orange
410 Green Avenue
Orange, Texas 77630
Office phone: 409-882-3324
Email: Carolyn.Mello@LSCO.edu

Dr. Santiago Silva, Past-President
University of Texas – Pan American
1201 W. University Drive
Edinburg, Texas 78540
Office phone: 956-292-7482
Email: ssilva@panam.edu

TxCRLA OFFICERS

Dr. Karon Mathews, President
Texas A & M University
4230 Blocker, Room 525
College Station, Texas 77843-4230
Office phone: 979-458-0684
Email: k-mathews@tamu.edu

Dr. Kathy Stein, President-Elect
University of Texas at El Paso (UTEP)
Library 300 (TLC)
500 W. University Drive
El Paso, Texas 79968
Office phone: 915-747-5325
Email: kstein@utep.edu

Sharon Haigler, Treasurer
Texas A&M University
4230 TAMU/Student Learning Center
College Station, Texas 77843-4230
Office phone: 979-458-0700
Email: s-haigler@tamu.edu

Ann Rogers, Secretary
DeVry – Dallas
2105 Tennyson Dr.
Flower Mound, TX 75028
Office phone: 972-929-6777
Email: arogers@devry.edu

Linda Callen, Membership Chair
Texas A&M University
4230 TAMU/Student Learning Center
College Station, TX 77843-4230
Office phone: 979-845-2724
Email: lcallen@tamu.edu

Dr. Sharon Pate, Past-President

CASP Newsletter

College Academic Support Programs Fall 2007

Editor

Lisa Cradit

Contributors

Betty Black
Karon Mathews
Sandra Chumchal
Kathy Stein

Editorial Assistants

CASP Board members
Jon Cradit

The CASP Newsletter is published twice a year as a joint venture of the Texas Association for Developmental Education (TADE) and the Texas Chapter of the College Reading and Learning Association (TxCRLA). Opinions expressed by the authors are not necessarily those of the editors or TADE or TxCRLA. Authors are responsible for the accuracy of content and citation of all references. Materials accepted for publication are subject to revision at the discretion of the editor.

We encourage letters and news items from members of both organizations. Articles should be saved in 10 point font in Times New Roman, as rich text format and should be submitted as an attachment to an email message to the editor.

Submit contributions to:

Lisa Cradit
Texas Lutheran University
1000 W. Court St.
Seguin, TX 78155
830-372-6305
lcradit@tlu.edu

CASP and Coordinating Board Representatives

Cynthia Ferrell
Coordinating Board Liaison
Texas Higher Education Coordinating Board
P.O. Box 12788
Austin, Texas 78711
Office phone: 512-427-6237
Fax: 512-427-6264
Email: Cynthia.Ferrell@thehb.state.tx.us

Political Liaisons
Austin Community College
Northridge Campus
11928 Stonehollow Dr.
Austin, TX 78758

Co-Site Chairs for CASP 2007– The Woodlands

Lane Johnson
Office Phone: 281-813-1194
Email: lane.johnson@nhmccd.edu
Jean Grove
Office Phone: 281-813-6698
Email: Jean.B.Grove@nhmccd.edu

Mary Leonard
Office phone: 512-223-4711
Fax: 512-223-4898
Email: mleo@austincc.edu
Sibyl Noack
Office phone: 512-223-4857
Fax: 512-223-4898
Email: snoack@austincc.edu

Lisa Cradit Appointed CASP Newsletter Editor

Meet the new editor of the CASP newsletter! Lisa Cradit accepted the mid-term appointment to the position of editor after the CASP Board regretfully accepted the resignation of NADE president-elect Rosemary Karr. While we regret the loss of Rosemary's service in this office to our state organizations, she continues to serve us in her national leadership role. Lisa Cradit came to the Board with high recommendations and we are most fortunate to have her in this position. Lisa serves as Director of Academic Support at Texas Lutheran University in Seguin.

If you've not become acquainted with Lisa at previous CASP conferences, please plan to meet her when we convene at The Woodlands. Welcome, Lisa!

College Academic Support Programs

TxCRLA

Texas College Reading
& Learning Association



TADE

Texas Association for
Developmental
Education

CASP Newsletter Editor

Attn: Lisa Cradit
Texas Lutheran University
Address: 1000 W. Court St.
Seguin, TX 78155
Phone: 830-372-6305
Email: lcradit@tlu.edu

PRSR STD
U.S. Postage
PAID
Plano, Texas
Permit No.

WEB Sites

TxCRLA: www.txcrla.org

TADE: www.tade.org

CRLA: www.CRLA.net

NADE: www.NADE.net

Texas Higher Education Coordinating
Board: www.THECB.State.Tx.US